

Reference : C-R30S29 8-30FR

The Fixolite box is a 6 m long prefabricated lintel box designed to receive a closure (roller shutter, BSO, etc.). The box consists of an inverted U-shaped, fire-retardant expanded polystyrene (30 kg/m³ density) shell reinforced with steel mesh. The side walls are fitted with aluminum rails.

Reinforced model box. This box is reinforced by 3 mm steel brackets, every 1.2 m and is intended for openings of more than 1.6 m. The box is certified by Technical Advice to the CSTB.

| | |
|----------------------|---|
| Type | R30S29 |
| Outer rail ref. | 827 |
| Inner rail ref. | 30FR |
| Color | Grey graphitized polystyrene |
| Compatible cheek | J-28 |
| Certification | CSTB 16-11-634 (translated) [PDF] |
| Thermal conductivity | U = 0.7 W/m ² .K |
| Thermal resistance* | R = 1.42 m ² .K/W |

(*) R: thermal resistance (m².K/W) taking into account a λ coefficient of 0.0374 W/m.K after application of a safety coefficient of 1.15.

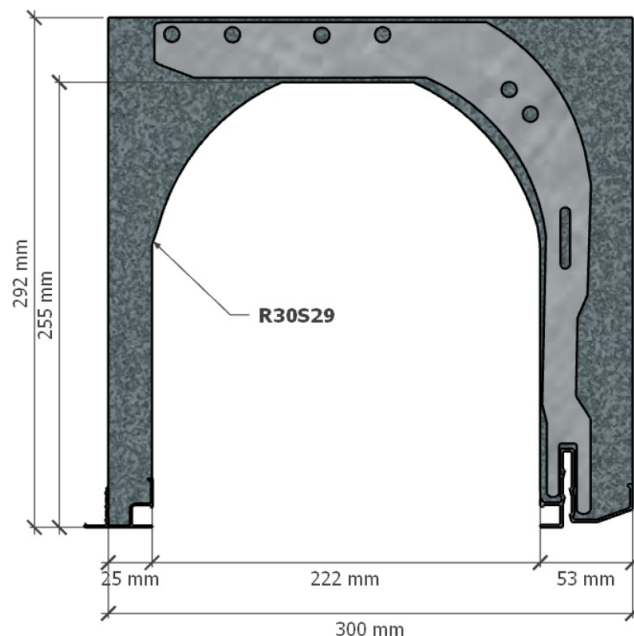
| | |
|-----------------------------------|------------------------------------|
| Weight | 2.9 kg/m |
| Reaction to fire | class E (EN ISO 11925-2/EN 13 501) |
| Air permeability | c*3 class |
| Acoustic perf. (Dn _W) | 55 dB |

Box dimensions

| | |
|---------------|--------|
| Width | 300 mm |
| Height | 292 mm |
| Tunnel | 222 mm |
| External side | 53 mm |
| Internal side | 25 mm |

Components

| | |
|---------------------------|-----------------|
| Aluminium (recycl. 85%) | 0.98 kg/m |
| Steel (recycl. 96.5%) | 1.02 kg/m |
| Polystyrene (recycl. 10%) | 0.9 kg/m |
| Total | 2.9 kg/m |

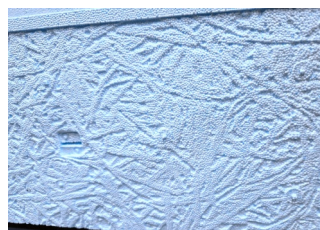


Option brackets and ligatures [PDF]: in accordance with the technical advice of the CSTB, the reinforced boxes will be ligatures to the chain and fixed to the upper crosspiece using brackets. Brackets and ligatures are available in packs of 500 pieces or integrated into the box during production.

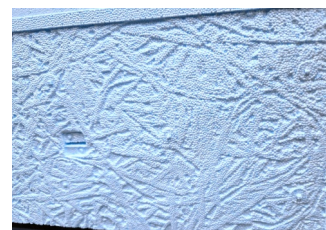
Corner option [PDF]: the rails 30FR allow the addition of the sealing and fixing corner with the joinery. These 40x30 mm notched corners are available in packs of 100 pieces or inserted in the box.

Sides finishing

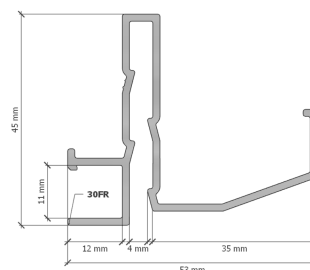
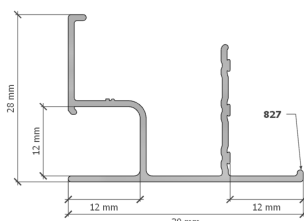
External side
Structured polystyrene



Internal side
Structured polystyrene



Rail diagram



English



Français



2024-12 • Fixolite Disclaimer. The information provided in this technical sheet is for reference only and without warranty of accuracy or completeness. Fixolite disclaims any liability for errors, omissions, or consequences related to the use of this information. Specifications are subject to change without notice.

Check out our [installation instructions \[PDF\]](#) and [general documentation](#)