

#### Reference : C-BSO28H32 8-FX-PG F-NG

The Fixolite box is a 6 m long prefabricated lintel box designed to receive a closure (roller shutter, BSO, etc.). The box consists of an inverted U-shaped, fire-retardant expanded polystyrene (30 kg/m<sup>3</sup> density) shell reinforced with steel mesh. The side walls are fitted with aluminum rails.

**Orientable Sun Shade model box.** This box is specially adapted for BSOs. Its cutaway allows it to accommodate the largest shutters and to fix it on its central rail. The box is certified by Technical Advice to the CSTB.

Type	BSO28H32
Outer rail ref.	827
Inner rail ref.	PG
Finishing	Wood-cement fiber
Color	Grey graphitized polystyrene
Compatible cheek	J-BSO
Certification	<a href="#">CSTB 16-11-634</a> (translated)
Thermal conductivity	U = 0.39 W/m <sup>2</sup> .K
Thermal resistance*	R = 2.54 m <sup>2</sup> .K/W
(*) R: thermal resistance (m <sup>2</sup> .K/W) taking into account a $\lambda$ coefficient of 0.0374 W/m.K after application of a safety coefficient of 1.15.	
Weight	4.8 kg/m
Reaction to fire	class E (EN ISO 11925-2/EN 13 501)
Air permeability	c*3 class
Acoustic perf. (Dn <sub>W</sub> )	58 dB

#### Components

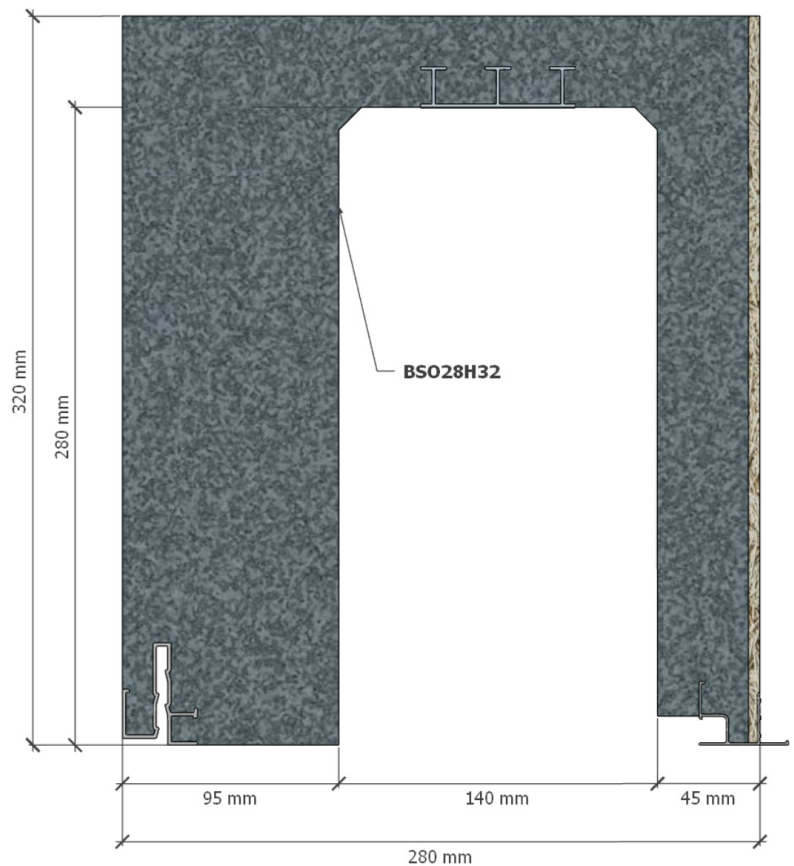
Aluminium (recycl. 85%)	1.04 kg/m
Steel (recycl. 96.5%)	1.1 kg/m
Polystyrene (recycl. 10%)	1.51 kg/m
Wood-cement fiber	1.15 kg/m
<b>Total</b>	<b>4.8 kg/m</b>

#### Finishing (Wood-cement fiber)



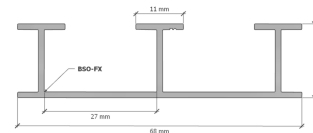
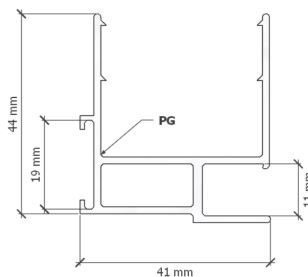
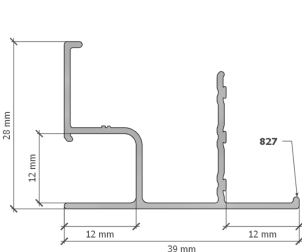
#### Box dimensions

Width	280 mm
Height	320 mm
Tunnel	140 mm
External side	95 mm
Internal side	45 mm



Box shown: C-BSO28H32 8-FX-28FR F-NG

#### Rail diagram



English version:

[https://fixolite.eu/doc/C-BSO28H32\\_8-FX-PG\\_F-NG.en.pdf](https://fixolite.eu/doc/C-BSO28H32_8-FX-PG_F-NG.en.pdf)



Version française:

[https://fixolite.eu/doc/C-BSO28H32\\_8-FX-PG\\_F-NG.fr.pdf](https://fixolite.eu/doc/C-BSO28H32_8-FX-PG_F-NG.fr.pdf)