

#### Reference : C-BSO28H30 8F-FT-28FR TC

The Fixolite box is a 6 m long prefabricated lintel box designed to receive a closure (roller shutter, BSO, etc.). The box consists of an inverted U-shaped, fire-retardant expanded polystyrene (30 kg/m<sup>3</sup> density) shell reinforced with steel mesh. The side walls are fitted with aluminum rails.

**Orientable Sun Shade model box.** This box is specially adapted for BSOs. Its cutaway allows it to accommodate the largest shutters and to fix it on its central rail. The box is certified by Technical Advice to the CSTB.

Type	BSO28H30
Outer rail ref.	8F
Inner rail ref.	28FR
Color	Grey graphitized polystyrene
Compatible cheek	J-BSO

Certification [CSTB 16-11-634](#)  
(translated)

Thermal conductivity  $U = 0.33 \text{ W/m}^2.\text{K}$

Thermal resistance\*  $R = 3.05 \text{ m}^2.\text{K/W}$

(\* ) R: thermal resistance (m<sup>2</sup>.K/W) taking into account a  $\lambda$  coefficient of 0.0374 W/m.K after application of a safety coefficient of 1.15.

Weight	8.23 kg/m
Reaction to fire	class E (EN ISO 11925-2/EN 13 501)
Air permeability	c*3 class
Acoustic perf. (Dn <sub>w</sub> )	58 dB

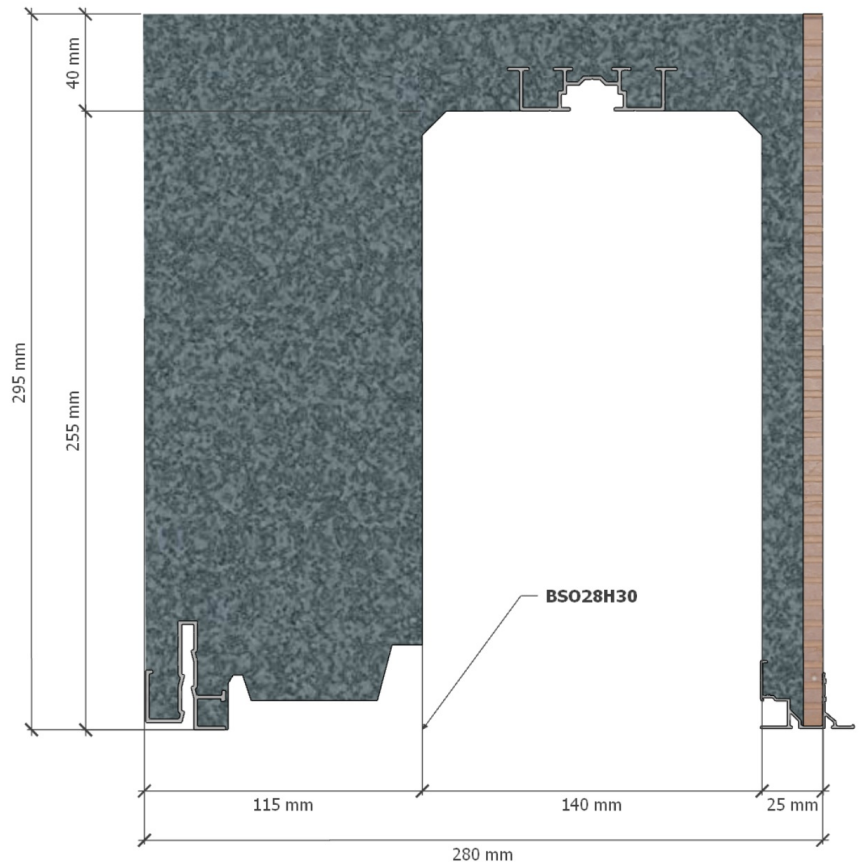
#### Box dimensions

Width	280 mm
Height	295 mm
Tunnel	140 mm
External side	114 mm
Internal side	26 mm

#### Components

Brick (terracotta)	4.06 kg/m
Aluminium (recycl. 85%)	1.57 kg/m
Steel (recycl. 96.5%)	1.1 kg/m
Polystyrene (recycl. 10%)	1.51 kg/m

**Total 8.23 kg/m**



#### Sides finishing

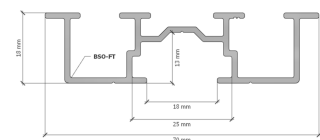
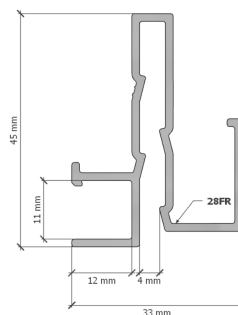
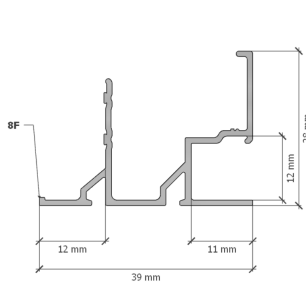
**External side**  
Brick (terracotta)



**Internal side**  
Ribbed polystyrene



#### Rail diagram



English version    Version française



**2024-04 • Fixolite Disclaimer.** The information provided in this technical sheet is for reference only and without warranty of accuracy or completeness. Fixolite disclaims any liability for errors, omissions, or consequences related to the use of this information. Specifications are subject to change without notice.