

**FIXOLITE HIGH INSULATION (HI block)****Reference : B-HI 35/12+19**

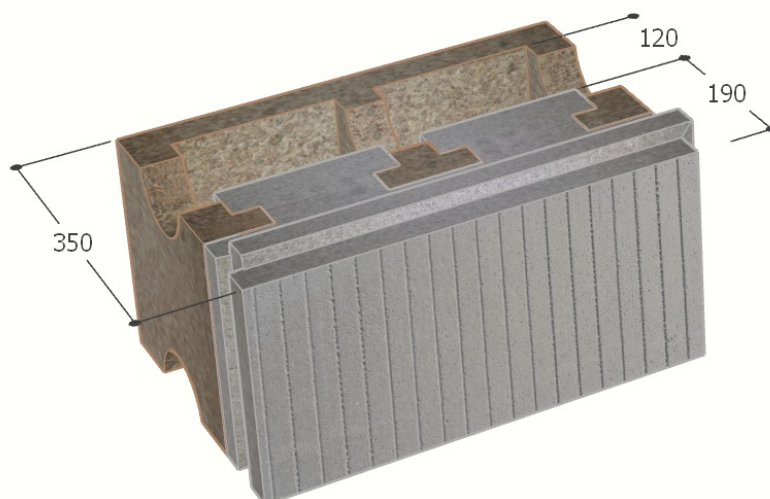
Fixolite block, made in Belgium.

Dimensions are 50 cm wide, 25 cm high (1m<sup>2</sup> = 8 blocks) and depth varies according to requirements.

The block is made of wood-cement with external insulation in fire-retardant expanded polystyrene (density 40 gr/m<sup>3</sup>) from 17 to 34 cm.

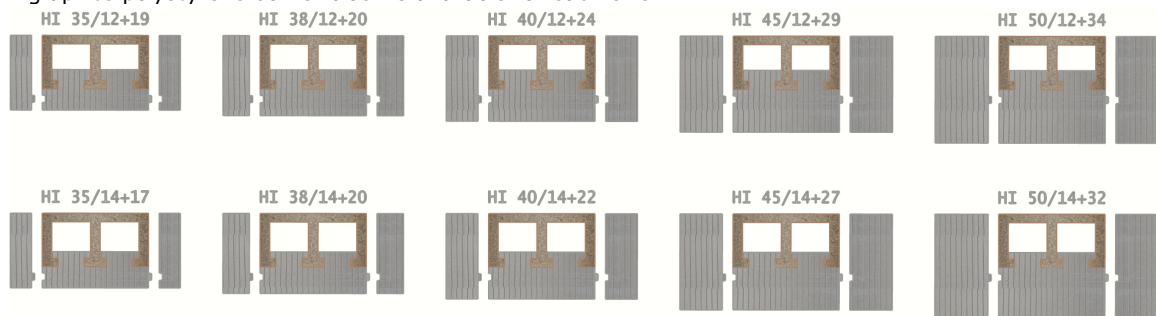
The block has no thermal bridges.

Total thickness	35.0 cm
Insulation thickness	19.0 cm
Concrete thickness	12.0 cm
Interior side thickness	4.0 cm
Exterior side thickness	4.0 cm
Concrete volume	95.0 l/m <sup>2</sup>
Density	± 510 kg/m <sup>3</sup>
Weight	66.48 kg/m <sup>2</sup>
Thermal insulation λ	0.10 W/m <sup>2</sup> K
R coefficient	5.56 m <sup>2</sup> K/W
U coefficient	0.18 W/m <sup>2</sup> K
Sound absorption α	> 90% (100→5000Hz)
Sound insulation	50 dB
Reaction to fire	Non-flammable (M1)
Fire resistance	> 6h (ISO 834)
Rot-proof	✓
Flexural strength	± 200 DaN

**Fixolite high-insulation block range**

Fixolite offers 5 sizes of High Insulation blocks with insulation ranging from 17 to 34 cm.

A graphite polystyrene corner block is available for each size.

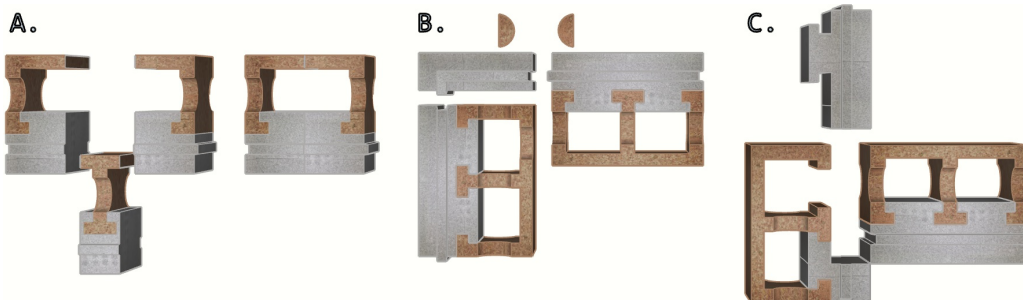
**Notes**

Corner block reference:

- **B-HI 35.AL** (left)
- **B-HI 35.AR** (right)

On-site cutouts:

- A. for narrow block
- B. for external angle
- C. for internal angle



**English version :**

[https://fixolite.eu/doc/B\\_HI\\_35\\_12\\_19.en.pdf](https://fixolite.eu/doc/B_HI_35_12_19.en.pdf)



**Version française :**

[https://fixolite.eu/doc/B\\_HI\\_35\\_12\\_19.fr.pdf](https://fixolite.eu/doc/B_HI_35_12_19.fr.pdf)